

Geehy Semiconductor

Corporate Overview

May, 2023

Geehy
SEMICONDUCTOR

**TECHNOLOGY
INSPIRED.**

PUBLIC

© 2019-2023 GEEHY SEMICONDUCTOR CO.,LTD. ALL RIGHTS RESERVED.
All brand names & trademarks are properties of other respective holders and used for descriptive purposes only.

Who We Are

Geehy



Top 10 China IC Design

Top 10 China's Fabless Companies (MCU)

Listed company in Shenzhen Stock Market

Our Mission

Drive industry innovation

Create value for customers continually

Our Vision

Become an international leading
integrated circuit design enterprise



450+ Millions Annual Shipments



Over **100** sales offices & agencies serving
over **20,000** customers across the globe

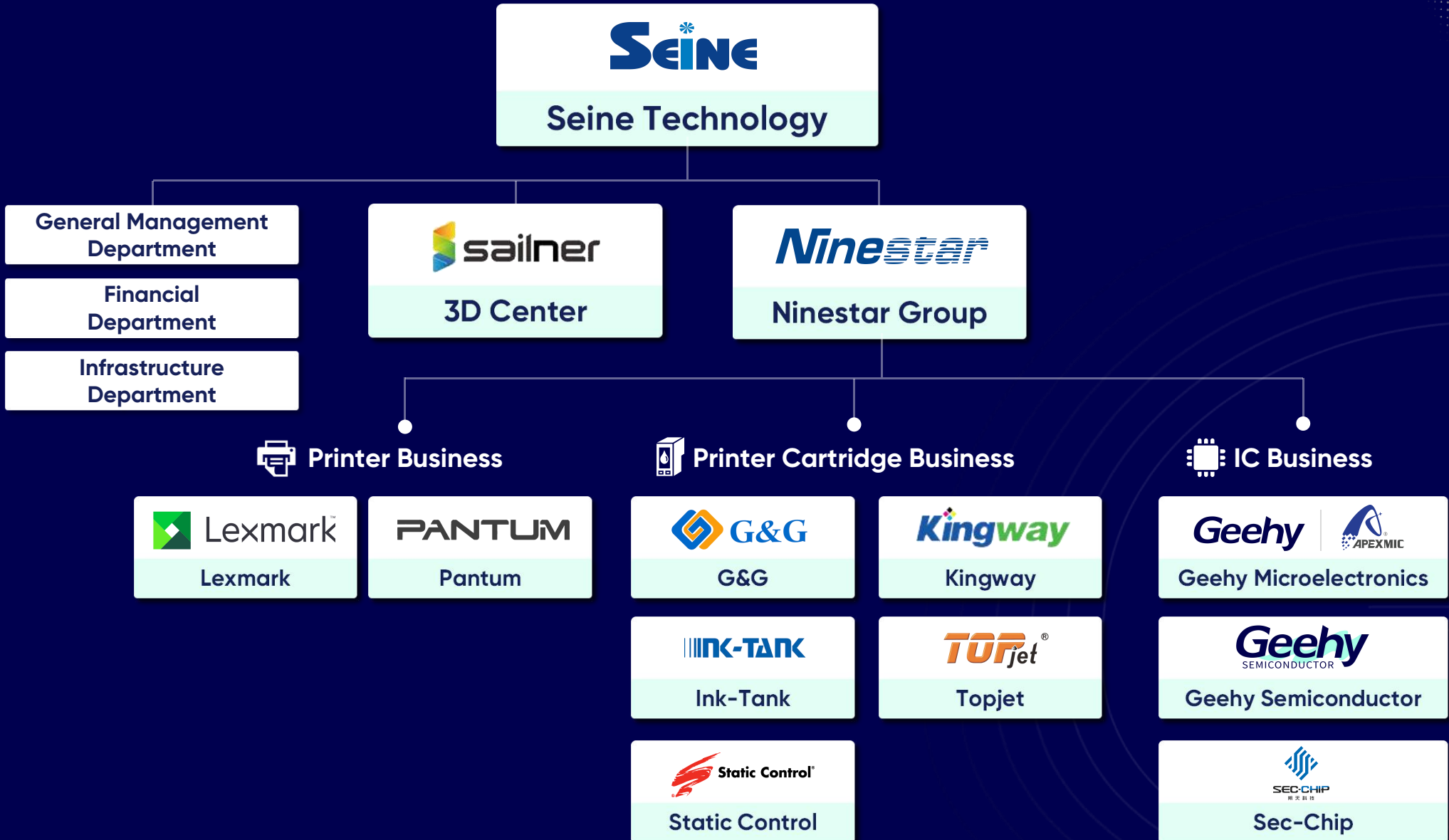
Overview of the develop history, R&D strengths, supply chain and distribution web.

Product & Solution of 3 independent Business Units

Intellectual Property Rights

Support & Eco-system

Group Structure



Our Development Process

2004~2017

Focus on dedicated encryption chips and expand in the printing field.

2004

Established in Zhuhai, China. Started dedicated encryption chip business.

2012

Launched multi-core SoC chips.

2018

Obtained permanent authorization of CPU from Arm® Cortex®-M0+/M3/M4 and released first 32-bit general-purpose MCU.

2019

Geehy Semiconductor was founded and strives for the market of MCUs.

2015

Became the world's top manufacturer of encryption chips in the printing field.

2020

Established Geehy US branch and entered into the international market.

2022

Completed the overall technical and product layout of non-printing chips; launched AEC-Q100 compliant automotive MCUs.

2023

Awarded "TOP 10 China IC Design Brands" in the 2023 China IC Design Awards.

2019~ Future

Focus on general-purpose MCUs, and mixed signal analog ICs and expand in industrial, automotive, consumer electronics fields.

Geehy



R&D Investments



30%

R&D Costs



500+

Engineers



6

R&D Centers



660+

Patent Families

R&D Centers

Geehy



Zhuhai, China

R&D headquarters, 20 years of research and development experience in IC security and certification, responsible for product definition, system simulation testing, and end product application software development.



Hangzhou, China

With more than 20 years of industry experience, the team is mainly composed of advanced doctors from Zhejiang University. The team leads the completion of the domestic CPU industrialization project and has the strongest chip industrialization capability in China.



North Carolina, USA

Over 30 years of experience in digital/analog IC design, responsible for IC simulation, digital/analog hybrid integrated circuit design, fault analysis, and IP design.



Shanghai, China

With more than 20 years of industry experience and doctors from Fudan University as the core team strength. Rapid integration with international chip design capabilities, so Geehy's R&D level has leapfrogged development.



Zhengzhou, China

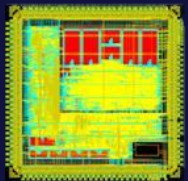
In 2020, an IC research Institute was established with Zhengzhou University. After two years of talent training and operation, the main team force, is mainly responsible for the back-end verification and testing.



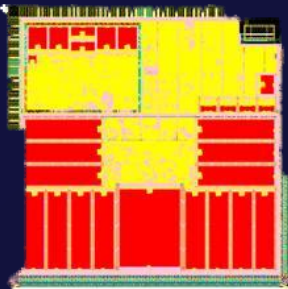
Chengdu, China

With more than 20 years of industry experience and doctors from the University of Electronic Science and Technology of China as the core team strength, and the team members come from famous international IC companies.

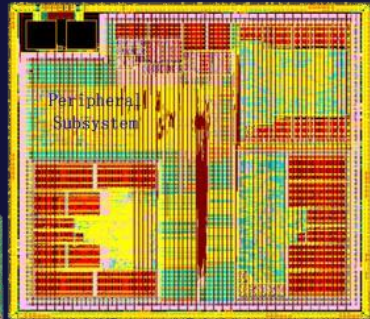
SoC Design Capability on Multicore Architecture



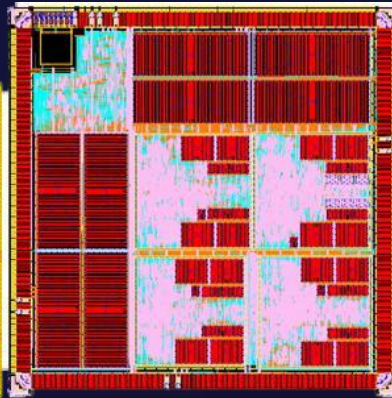
1-Core
SoC/MCU



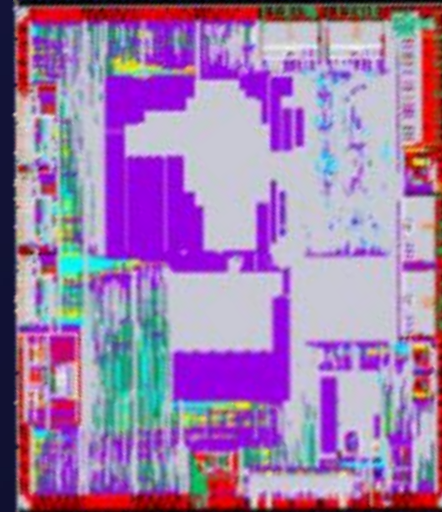
RISC+DSP
SoC



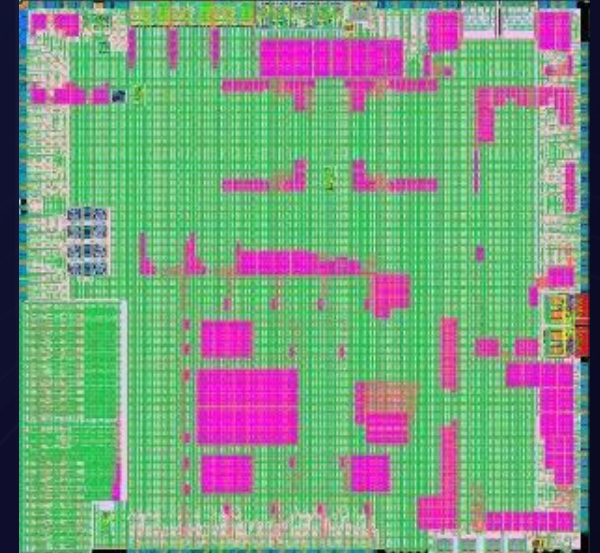
3-Core
SoC



4-Core
SoC/MPU

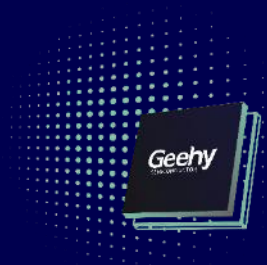


7-Core
SoC

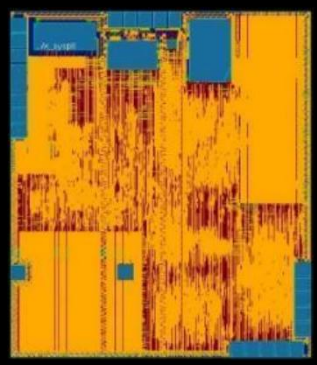


9-Core
SoC

Cases on Different Silicon Process



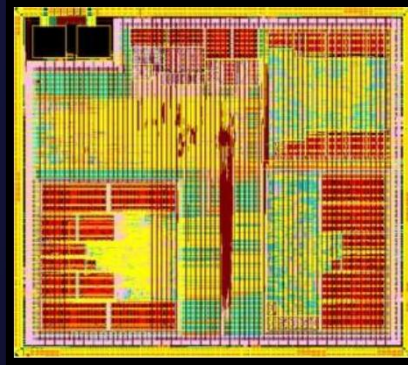
UMC110-eFlash



Samsung90nm



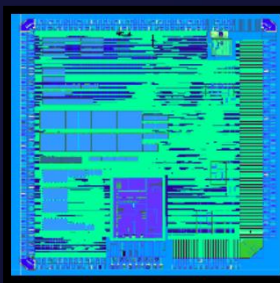
SMIC55LL



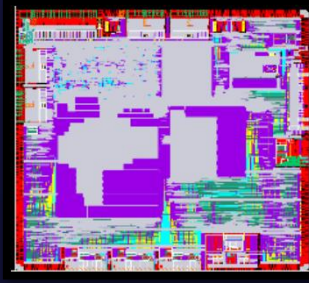
TSMC65LP



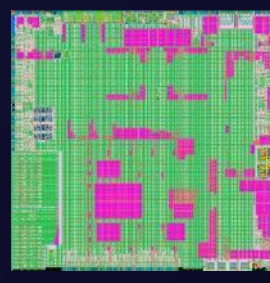
TSMC40G



UMC40LP



UMC28nm



- Tightly connection with main foundries

Attractive price and stable manufacturing resource

- Capability for chip services at main process nodes

180 nm to 28 nm

Different silicon process: Logic, Mixed-signal, RF, eFlash, EEPROM, Low Power, High Voltage, etc.

8-inch to 12-inch wafer

Supply Chain

Continue to promote the cooperation of the whole industry chain

Through upstream and downstream cooperation between IC design companies and manufacturing enterprises, an independent and controllable industrial chain in IC design, key IP, characteristic processes, packaging, testing and production capacity is formed to improve the quality of products.



FAB
France

FAB
Germany

FAB
Beijing, China

FAB
Wuxi, Jiangsu,
China

FAB
Shanghai, China

FAB
Malaysia

FAB
Taiwan, China

FAB
Singapore

FAB
Suzhou, Zhejiang,
China

FAB
Xiamen,
Fujian, China

Cooperative Foundry/Assembly

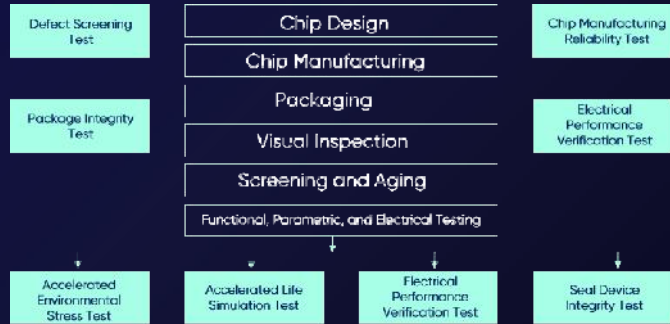
Front-end

Back-end

Reliability Analysis & Verification Platform

Geehy

Reliability Test to Verify System Capability



Failure Mechanism Based Stress Test Qualification for Integrated Circuits

- ESD - Human Body Model as per AEC Q100-002
- ESD - Charged Device Model as per AEC Q100-011
- Latch-Up as per AEC Q100-004
- Electrical Distributions as per AEC Q100-009
- Fault Grading as per AEC-Q100-007
- Characterization as per AEC Q003
- Electromagnetic Compatibility as per SAE J1752/3
- Short Circuit Characterization as per AEC Q100-012

Build an Independent Laboratory for Automotive-grade ICs

- Testing exceeds **AEC-Q100** Requirements
- Developed automotive-grade testing platform to ensure high reliability, security and durability

Facility

- Over **2100m²** Laboratory Floor Space
- Over **US\$13,800,000** investment in on-site equipment
- Five CNAS accredited labs: electrical verification, component reliability, environmental reliability, failure analysis



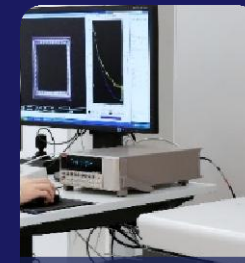
Electrical Verification



Component Reliability



Environmental Reliability



Failure Analysis



Application

Functional Safety Certification



APM32 MCU-based functional safety certification helps reduce development costs and shorten development time.

ISO 26262	AEC-Q100	IEC 61508	IEC 60730	USB-IF
 <p>Functional Safety Management Geely Semiconductor Co., Ltd. TÜV Rheinland</p>	 <p>VERIFICATION OF CONFORMITY Geely Semiconductor Co., Ltd. SGS</p>	 <p>CERTIFICATE APX MICROELECTRONICS CO., LTD. SGS</p>	 <p>VERIFICATION OF COMPLIANCE Geely Semiconductor Co., Ltd. SGS</p>	 <p>COMPLIANCE PROGRAM TEST REPORT USB 2.0 Test Report For Peripheral Allion</p>

■ Meet the requirements of highest automotive safety integrity level (ASIL D).

- Certified the AEC-Q100 Grade 1 and Grade 2.
 - [APM32A407VGT7/ZGT7](#)
 - [APM32A103RET7/VET7/CBT7](#)
 - [APM32A091RCT7](#)
 - [APM32F103RCT7](#)
 - [APM32F072RBT7/CBT7](#)

■ Meet industry-specific SIL2 and SIL3 standards.

- [APM32F103](#)

■ Comply with the class B safety standard for household appliances.

- [APM32E103](#)
- [APM32F072](#)
- [APM32F030](#)

■ Accomplish compliance testing and acquire USB logo certification.

- [APM32E103](#)
- [APM32F103ZE/VB](#)
- [APM32F072VBT6](#)

Quality Management Structure



Company Strategy

Quality Strategy



- Competitor Analysis
- Product Specification
- Project Management
- Simulation & Modeling

- FPGA Validate
- MPW Validate
- FULLMASK Validate

- Process Validate
- Characterization
- Re-qualification
- Customer Claim Management
- Supplier Quality Management

- IQC
- OQC
- ORT

Quality Continuous Improvement

Connect the World

Geehy

Agencies in North America and Canada



Agencies in Europe



Agencies in Asia



US OFFICE
3010 Lee Avenue
PO Box 152, Sanford,
NC, 27332, USA

SUBSIDIARY
Chengdu, Sichuan

SUBSIDIARY
Zhengzhou, Henan



SUBSIDIARY&OFFICE
Shanghai

OFFICE
Guangzhou, Guangdong

SUBSIDIARY
Hangzhou, Zhejiang

OFFICE
Shenzhen, Guangdong

HEADQUARTER
Zhuhai, Guangdong

-  Headquarter
-  Research & Development
-  Agencies

Over **100** sales offices & agencies serving over **20,000** customers across the globe

Overview of the develop history, R&D strengths, supply chain and distribution web.

Product & Solution of 3 independent Business Units

Intellectual Property Rights

Support & Eco-system

Innovative definition - "MCU+"



APM32 MCU provides the performance and functional capabilities to meet the requirements of industrial, customer electronics and automotive applications from general-purpose microcontroller control to wireless connectivity solutions and beyond.

Customer Oriented

Comprehensive Product Range

In-house Design & Advanced Fab Technology

More Than A Silicon



High Performance MCUs

Mainstream MCUs

Basic MCUs

Motor Specific MCUs

Ultra-Low-Power MCUs

Wireless MCUs

Automotive Grade



Embedded Flash Technology

MCU + Analog

MCU + Sensor

MCU + Algorithms

MCU + Solutions

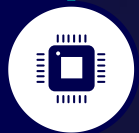
MCU + Connectivity

MCU + DSP

Three Pillars of Geehy Products – “not only MCU”

Geehy
Microelectronics

Microcontrollers and Microprocessors



- APM32 Industrial Grade MCUs
- APM32 Motor MCUs
- G32A Automotive MCUs
- GW Wireless MCUs

Analog and Mixed-signal ICs



- Battery Management ICs
- Interface and Connectivity Solutions
- Sensors

Application-Specific SoC & ASIC Solution



- Secure SoC
- ASIC Design
- SoC Design

OUR TARGET MARKETS

Smart Home



Consumer Electronics



Automotive



Industry Control



Smart Energy



Communication Facilities



APM32 MCU Family Tree



Automotive
& Industrial



Functional Safety
& Security



Motor Control



Connectivity



Ultra-Low Power



Touch



Based on Arm® Cortex®-
M0+/M3/M4F/M5x/M7...

**APM32
MCU**

160+ SKUS

High
Performance
MCUs



APM32H723

APM32E501/502

APM32E430

APM32F417

APM32F411

APM32F407/405

Cortex-M5x/M7/M4F

Mainstream
MCUs



APM32E103

APM32S103

APM32F107/105

APM32F103

Cortex-M3

Basic
MCUs



APM32F091

APM32F072

APM32F051

APM32S030

APM32F030

APM32F003

Cortex-M0+

Motor
Dedicated
MCUs



APM32F035

APMSPIN32F020

Cortex-M0+

Ultra-Low-
Power MCUs



APM32L072

APM32L083

Cortex-M0+

Wireless
MCUs



GW8811(BLE4.2)

GW3323(BLE5.2)

Cortex-M0
RISC-V

Automotive
Grade



APM32A407

APM32A103

APM32F103RCT7

APM32A091

APM32F072RBT7

APM32F072CBT7

Cortex-M4F/M3/M0+



APM32 MCU HOT Models



Based on
Arm® Cortex®- M4F Core

APM32F417xG



APM32F417xE



APM32F407xG



APM32F407xE



APM32F405xG



APM32A407VG



APM32A407ZG



Based on
Arm® Cortex®- M3 Core

APM32E103



APM32F107/105



APM32S103



APM32F103xE



APM32F103xC



APM32F103xB



APM32A103



Based on
Arm® Cortex®- M0+Core

APM32F091



APM32F072



APM32F051



APM32F030xC



APM32F030x8



APM32F003



APM32A091



APM32F411 : High-performance & Valuable MCU

COMING SOON

Geehy

KEY FEATURES

- Adopts the advanced 55-nm process
- Integrated processing, control, networking, and other functions
- Support FPU and DSP

SPECIFICATIONS

Core

Arm® Cortex®-M4F @ 120MHz

Memory

Flash 256/512KB, SRAM 128KB, PSRAM, NORFlash, NANDFlash ,etc

Supply

1.7~3.6V

Security

RNG, 128-bit AES/DES

Interfaces

U(S)ART*6,I2C*3,SPI*5,I2S*5,CAN*2,QSPI,USB_OTG, SMC,SDIO

Operating temperature

-40°C~+105°C

Packaging:

LQFP100/64/48, QFN48



Encoder



Charging Station



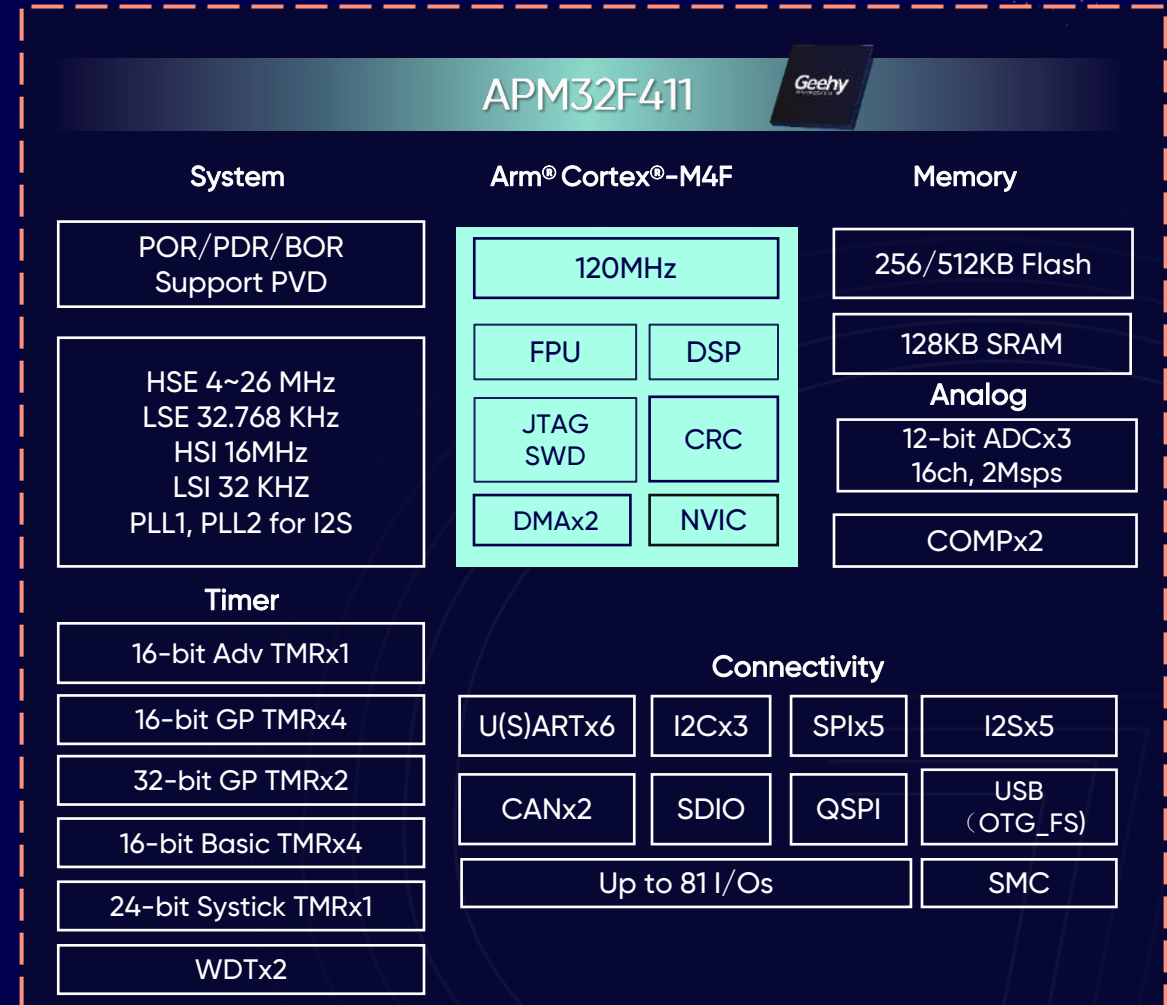
Inverter



3D Printer



Balance Car



APM32F035: Motor Dedicated MCU

COMING SOON

Geehy

KEY FEATURES

- Highly integrated
- Integrated mathematical accelerators commonly used in FoC algorithms
- Integrated operational amplifier, comparator and other analog peripherals
- Built-in CAN controller
- Meet cost and high performance

SPECIFICATIONS

- Core
 - Arm® Cortex®-M0+ @ 72MHz
- Memory
 - Flash 64KB, SRAM 8KB
- CORDIC
 - Divider, trigonometric operation, etc
- Supply
 - 2.0~3.6V
- Interfaces
 - I2Cx1, SPIx1, CANx1, UARTx2
- Operating temperature
 - -40°C~+105°C
- Packaging:
 - LQFP32/48



E-Bike



Water pump



Fan



Power tool

APM32F035

Geehy

System

POR/PDR/PVD

HSE 4~32 MHz
LSI 40 KHZ
HSI 8MHz

CORDIC

Temp & voltage
Sensor

Timer

Adv TMRx1

WDTx2

GP TMR x 5

RTC

Arm® Cortex®-M0+

72MHz

NVIC

SWD/SW
Debug/JTAG

DMAx7 ch

SysTick

CRC

Memory

64KB Flash

8KB SRAM

Analog

12-bit ADC, 1 Msp/s
up to 19 ch

COMPx2

OPx4

Connectivity

UARTx2

SPIx1

I2Cx1

CANx1

APM32L072/083: Ultra-low-power MCU

COMING SOON

Geehy

KEY FEATURES

- Adopts ULP stable process, supports ultra-low standby power, ultra-fast wake up, and flexible resource allocation

APM32L072

APM32L083
APM32L072+LCD

SPECIFICATIONS

- Core**
 - Arm® Cortex®-M0+ @ 32MHz
- Memory**
 - Flash 128/192KB, SRAM 20KB
- Supply**
 - 1.65~3.6V
- Security**
 - RNG, 128-bit AES/DES
- Interfaces**
 - U(S)ARTx4, I2Cx3, SPIx2, I2S*1, LCD*1,
 - LPUART*1, USBx1
- Operating temperature**
 - 40°C~+105°C
- Packaging:**
 - LQFP32/48/64/100



Electric Meter



Water Meter



Gas Meter



Smart Lock



Sensor

APM32L072/083

Geehy

System

POR/PDR

HSE 1~25 MHz
LSE 32.768 KHz
LSI 32 KHz
HSI 48MHz
HSI 16MHz
MSI 65KHz~4.2MHz

Timer

16-bit Basic
TMR x 2

WDTx2

16-bit GP TMR x 4

Low-power TMR x 1

24-bit Systick TMRx1

Arm® Cortex®-M0+

32MHz

SWD/SW Debug

NVIC

CRC

DMA x7 ch

Memory

128/192KB Flash

20KB SRAM

Analog

12-bit ADC, 1 Msps
up to 16 ch

12-bit DACx2

COMPx2

Connectivity

U(S)ARTx4

I2Cx3

SPIx2

I2S

USBx1

LCD

Low-power UARTx2

Up to 84 I/Os

High Performance MCU—APM32F4 Series



Based on Arm® Cortex®-M4F Core

Equipped with a 55nm process technology platform, this series integrates processing, control, and networking, considering the characteristics of high computing, high real-time, large storage, and ease of use.

APM32F417

APM32F407

APM32F405

■ Specification

- **Operating frequency: 168MHz**
- Flash 512/1024KB, SRAM 192+4KB
- Support FPU and DSP
- Power supply: 1.8~3.6V
- Operating temperature: -40°C~+105°C

■ Package

- LQFP64/100/144/176, BGA176

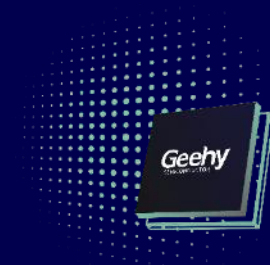
■ Application

Servo Driver, PLC, Encoder, Inverter, Charging Pile, 3D Printer, Industrial Controller, Ventilator, Inverter, Vehicle Multimedia and Balance Car.

■ Features

- Enhanced storage: Built-in **2MB SDRAM (optional)**, supports various external memories such as PSRAM, NORFlash, NANDFlash, etc.
- Expanded interfaces: U(S)ART, I2C, SPI, I2S, SDIO, CAN, DCI, Ethernet, EMMC, **high-speed OTG HS2 with integrated PHY**
- Analog peripherals:
- 12-bit ADC: 3, channels:16/24
- 12-bit DAC: 2,dual-channel
- High Security:
 - **International Cryptographic Algorithms: AES, DES, TDES—APM32F417**
 - Secure Hash Algorithms: RNG, HASH

Mainstream MCU—APM32E/S/F1 Series



Based on Arm® Cortex®-M3 Core

With characteristics of low power consumption, high performance, large capacity, good consistency, fast Flash erasing/writing speed, and rich peripheral resources, this MCU series has been widely used in various industries and unanimously recognized by customers.

APM32E103

APM32F107/105

APM32S103

APM32F103

■ Specification

- **Operating frequency: 96/120MHz**
- Flash 16~512KB, SRAM 6~128KB, SDRAM 2MB (optional)
- Support FPU (APM32F103xE/F103xB)
- Built-in RTC, 5/7/12 DMA channels
- Power supply: 2.0~3.6V
- Operating temperature: -40°C~+105°C

■ Package

- **LQFP48/64/100/144, QFN36/48**

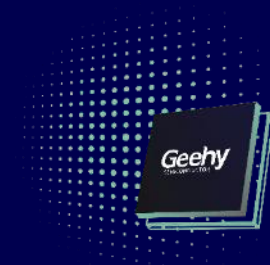
■ Application

Security Equipment, Solar Energy Storage, Industrial Motors, Convenient Medical Care, Elevator Control and Automotive Instrumentation.

■ Features

- **Built-in EMMC, LCD compatible with 8080/6800 mode (APM32F103xE)**
- Interfaces:
 - U(S)ART, I2C, SPI, I2S, USB, SDIO, QSPI; support USB and CAN to work independently;
 - **Built-in "dual CAN" interface , communication rate up to 1Mbit/s (E103/F103xC)**
- Analog peripherals:
 - 12-bit ADC: 2/3, channels: 16/21
 - 12-bit DAC: 2 ,dual-channel
- **Tsensor: 1 (E103/F103xC)**
- Up to 140 I/Os, all mappable to external interrupt vectors
- Reliability:
 - **Certified IEC 61508 SIL2/SIL3 (F103)**
 - **Certified IEC 60730 (E103)**

Basic MCU—APM32F0 Series



Based on Arm® Cortex®-M0+ Core

With low power consumption, wide temperature range, high performance, and high stability, this series can provide more flexible options for cost-sensitive applications, helping customers to obtain more complex and innovative product features at a more economical cost.

APM32F091

APM32F072

APM32F051

APM32F030

APM32F003

■ Specification

- Operating frequency: 48MHz
- Flash 16~256KB, SRAM 2~32KB
- Power supply: 2.0~5.5V
- Operating temperature: -40°C~+105°C

■ Package

- LQFP32/48/64/100, QFN20/28/32/48, TSSOP20, SOP20

■ Application

Vehicle GPS, BMS, Industrial Handheld Terminal, VR Glasses, Fingerprint Lock, Home Appliance Control Panel, POS Machine, Vehicle T-box, Driving Recorder, Handheld Vacuum Cleaner, Smoke Alarm, Forehead Thermometer, Electric Toys, Charger, EDR and Computer Peripherals.

■ Features

- Built-in HDMI CEC (APM32F091/F072)
- Support TSC capacitive touch function (APM32F091/F072/F051)
- Programmable analog comparator: 2 (APM32F091/F072/F051)
- Interfaces:
 - Up to U(S)ART, I2C, SPI, I2S, CAN(F072xB, F091xC)
- Full-speed USB2.0*1 (external-free, support BCD and LPM)—APM32F072
- ESD>8KV, with strong anti-interference & anti-static capability (APM32F003)
- Integrated high-speed internal oscillator with full range accuracy within ±3% and up to ±1% with user calibration (APM32F003)
- Reliability:
 - Certified IEC 60730 (APM32F072/F030)
 - Certified USB-IF (APM32F072)

Geehy 4 Business Units

The Geehy logo is located in the top right corner of the slide. It consists of the word "Geehy" in a white, sans-serif font, with the tagline "GEEHY MICROELECTRONICS" in a smaller font below it. The logo is set against a dark blue background with a grid of white dots.

Industrial & Security



High-performance MCU\MPU, provide supporting solutions, and promote the research and development of network communication security ICs, analog ICs, and digital/analog hybrid ICs.

Automotive



Launched in line with ISO 26262 functional safety standards of vehicle level MCU, dedicated MCU and sensor series products, the strategic layout of body control, intelligent cockpit, BMS power management, power, safety, domain control, and other fields.

New Energy



Follow the double carbon policy, facing fields of new energy, energy management, and photovoltaic energy storage, providing highly reliable BMS-related products and supporting solutions, and allocating more customer technical support resources.

Consumer Electronics



Focusing on middle and high-end smart home appliances and personal consumer electronics, relying on differentiated products and customized solutions, with a wide portfolio of products (universal MCU, dedicated ICs for motor, Bluetooth SoC) and complete toolchain support, to meet the needs of large-scale applications.

APM32 MCU | Automotive Applications

Geehy



Intelligent Cockpit



Charging Station



Headlight



EDR



HUD



Body Domain Controller



- 9 MCUs with AEC-Q100 certification.
- September 2022, Geehy was certified to ISO 26262 Functional Safety Management System
- In 2023, Geehy will launch the first ISO 26262 ASIL-B MCU



Geehy
SEMICONDUCTOR

Geehy Automotive-grade MCU Application



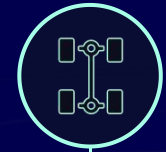
Body Control	
Field	MCU
Electric Tailgate	APM32A103
Body Domain Controller	APM32F103
	M3
Remote Window/Central Locking/ Light Control	96/120MHz
Sound Wave Simulation	CAN x 2



Infotainment System	
Field	MCU
Intelligent Seat	
T-box/HUD	APM32A091
Central Control Panel/Dashboard	APM32F072
	M0+
GPS	48MHz
Bluetooth	CAN x 1
Stereo	



Security System	
Field	MCU
Reversing Radar	APM32A091
	APM32F072
EDR/OBD	M0+
	48mhz
Drive Recorder	CAN X 1



Power System	
Field	MCU
Chassis Control	APM32A407
	APM32A103
	M4/M3
BMS Control Panel	168/120/96MHz
	CAN x 2

APM32 MCU | Industrial Field Applications



Servo Controller



PLC



Inverter



HMI



VFD



Energy Storage



- Over 60% of Geehy MCU is designed and produced as Industrial-grade MCU.
- IEC61508 SIL3 certified
- MASS PRODUCTION already for different industrial areas



Consumer Electronics Layout



Promote energy-saving, efficient and intelligent development of high-end consumer electronics

High-end Consumer MCUs

- Arm® Cortex® -M0+/M3/M4 cores
- Low power consumption, high performance, high stability
- Operating temperature $-40^{\circ}\text{C} \sim 105^{\circ}\text{C}$, ESD up to 8KV
- **IEC61508 SIL3 certified and USB-IF test certified**

Application Field: Smart home appliances, medical equipment, access control systems, smart lighting, etc.

BLE4.2 /5.2 SoC

- Arm® Cortex®-M0/RISC-V
- Support AoA/AoD positioning, MESH networking, transparent transmission, OTA
- Excellent RF characteristics and anti-interference performance

Application Field: Wearable devices, medical devices, location services, human-computer interaction, etc.

Motor Control Solutions

- BLDC motor control dedicated SoC
- Motor Control Algorithm Library
- Fast response speed, wide application range, low solution steady-state error
- Provide industry-specific production-grade reference designs

Application Field: Inverter home appliances, cordless vacuum cleaners, fitness equipment, electric bicycles, power tools, etc.

APM32 General-Purpose MCUs in the Consumer Electronics Field of Existing Application Cases



Continue to provide cost-effective products and services to bring long-term value to customers and users

Light Electric Vehicles	Electric Tool	Blower	Small Household Appliances

Large Household Appliances	Electronic Toys	Pet Peripheral	Personal Care

Mobile Phones & Computers Peripheral	Home Security	Intelligent Lighting	Personal Health



Based on Arm® Cortex®-M0+\M3\M4...

Overview of the develop history, R&D strengths, supply chain and distribution web.

Product & Solution of 3 independent Business Units

Intellectual Property Rights

Support & Eco-system

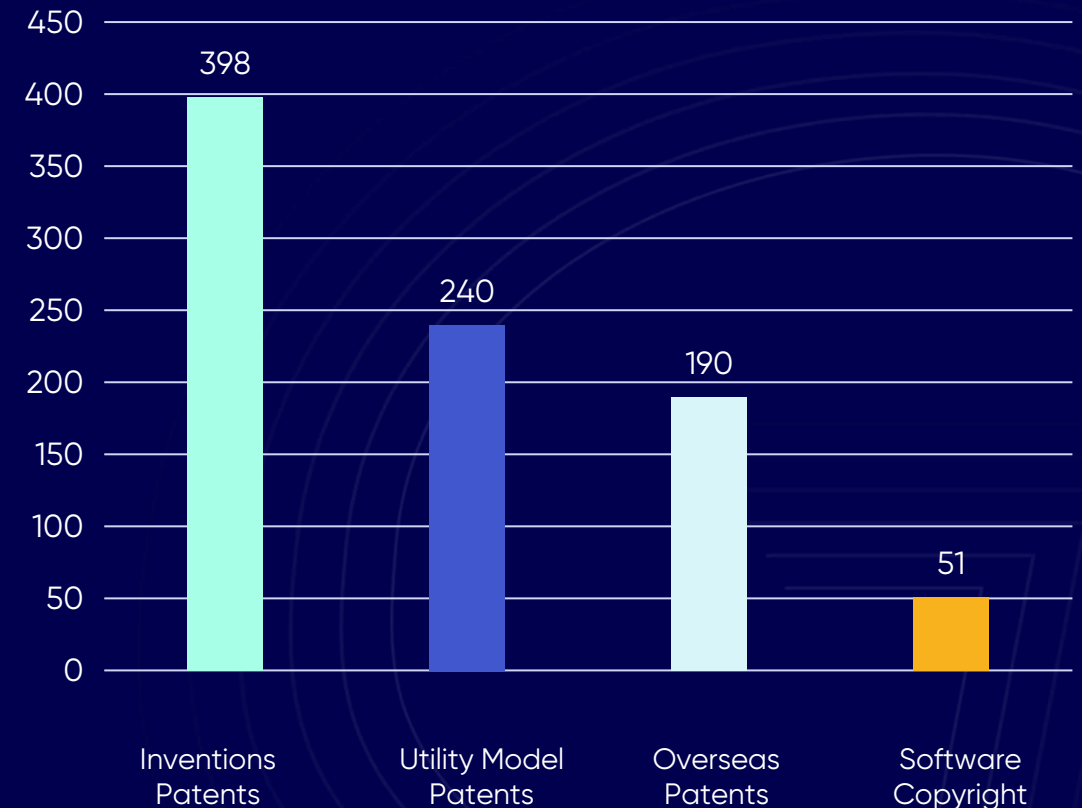
Powerful Intellectual Property Platform and Intellectual Property Risk Management Experience



Long-term focus on intellectual property protection

- **Accumulation of Patents:** The company has **1185 patents** for integrated circuits , of which **255** for MCU. (**143** authorized)
- **Professional Team:** Full-time patent team of **20 people** and **5 professional lawyers**, **9** of whom are dedicated to patent matters at Geehy.
- **Long-term International law firm Partnership:** Long-term legal partnership in Europe, Japan and the US.
- **Success Cases:** Responded to **9** of 337 international investigations and lawsuits, settled 6 cases and won **3** cases.

Available IC patents to the Group (As of December 2022)



Overview of the develop history, R&D strengths, supply chain and distribution web.

Product & Solution of 3 independent Business Units

Intellectual Property Rights

Support & Eco-system

Ecosystem for Development

Geehy

With a complete ecosystem, Geehy can provide a wealth of software and hardware development tools, helping engineers to accelerate product development, reduce development costs, and optimize product performance.



Development & Design

IDE

arm KEIL IAR SYSTEMS RT eclipse

MCAL



SDK



Reliability Test



Safety Lib



Official Tools

Programming Tool



Debug Tool



MINI Board



EVAL Board



ISP



Technical Support



Selection Tool

Selection guide
Online selection tool

Technical Doc

Datasheet
User manual
Application note
FAQ

Samples Support

Chip
Demo board

Services Support

Sales
FAE
AE

Partner Tools



Debug Tool



Ecological Platform



ACC



Github



Hackster



Training & Promotion



Webinar

Online Live

Offline Training

Campus Ecology



Graduate Training

Briefing Session

Design Competition

Join the International Exhibitions



embedded world 2023



Electronica 2022



APEC 2023 in USA



Electronica India

Upcoming Event



Meet Geehy at electronica India

- 🕒 September 13-15
- 📍 BIEC, Bengaluru

electronica India 2023

- 📅 September 13-15
- 📍 BIEC, Bengaluru

More information, please visit:

<https://electronica-india.com/en/>

FOLLOW US

Github



Hackster



Social Media



LinkedIn



Twitter



Youtube